

Albion Performing Arts Center

Statement of Philosophy

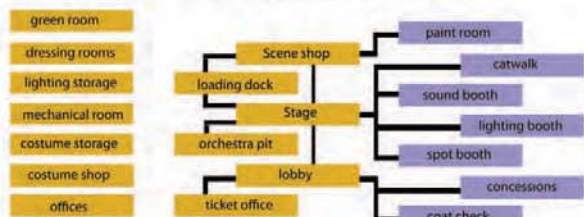
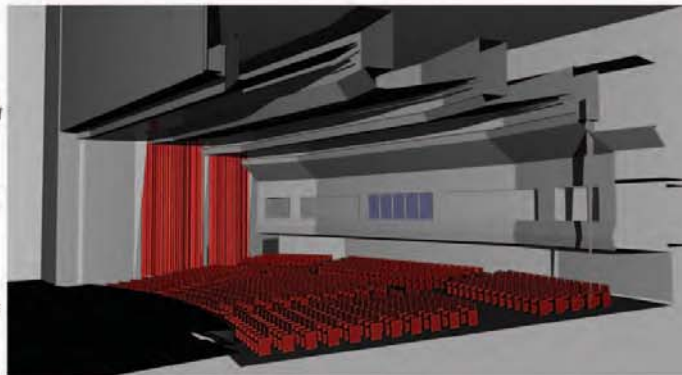
Albion needs a new theater facility, the current facility is poorly equipped and does not offer the best possible spaces to both learn and practice theater, it also is ill equipped as a performance space. With a new performing arts center, the community of Albion will be provided with unique opportunities to grow and learn that they would not get elsewhere.

Goals

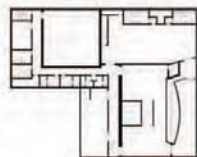
The main goal is to provide a theater program with the state of the art facilities it deserves, and in doing so make it totally self sustained on ticket sales, donations from the public, and grants.

Influence on the Surrounding Area

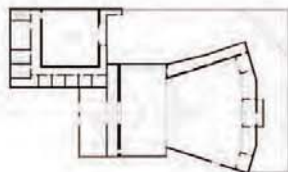
The shows that the Arts Council currently produce are well received by the community and surrounding areas. The hope is that the new facilities and updated equipment will allow for larger productions at a higher quality and will attract even more of the community, touring shows and donors. With the larger facilities and the larger crowds that will come to the productions it will result in an influx of revenue not only for the city but local shops and restaurants. It will also mean more tourist coming to Albion which will serve as a long term stimulus to the local economy.



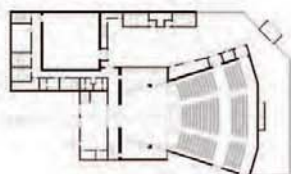
Basement



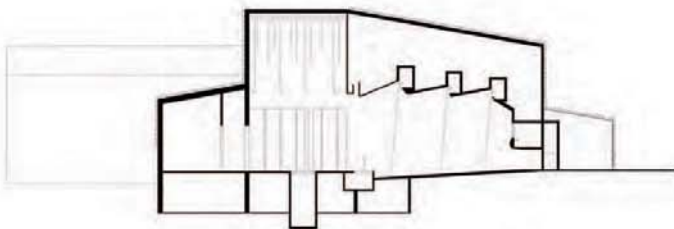
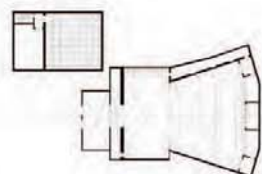
Second Floor



First Floor



Third Floor

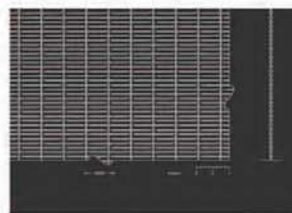


Ilumesh is a product by GKD Metal Fabrics, it is a process for illuminating the surface of GKD's metal fabric and projecting onto the reflective stainless steel, it is possible to wash an entire surface in color. Programming through a web-based interface makes it possible to create infinite variations of colors, motion, and even imagery.



Omega 1520

Material: AISI Type 316 stainless steel
 Open area: 50%
 Weight: 1.06 lbs/sqft
 Thickness: 0.177"
 Cable: 0.079" diameter
 Rod: .059" diameter
 Maximum width: 26'



Woven-in bar with spring:

The system was developed specifically for façades and parking structures where tension loads require consideration. Round bars are inserted into the fabric in place of weft wires at the top, bottom and intermediate locations. The top round bar is inserted into triangular brackets. Any intermediate round bars are connected to pivoting brackets for lateral support. Springs attach to the bottom bar in order to apply proper pre-tension to the fabric and to reduce the tension force on the structure. Eyebolts are attached to the springs to allow for maximum adjustability.

