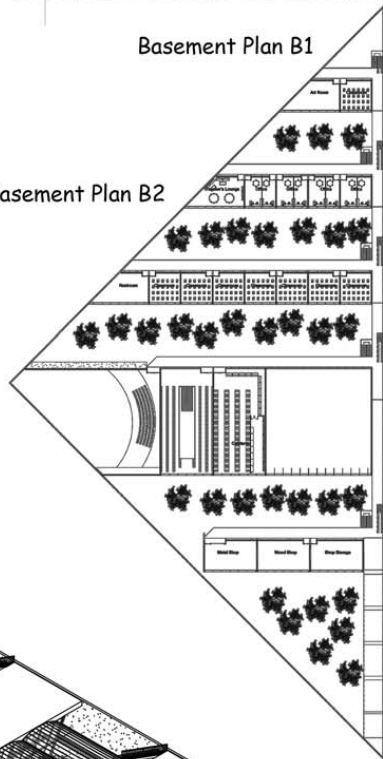


Basement Plan B1

Basement Plan B2

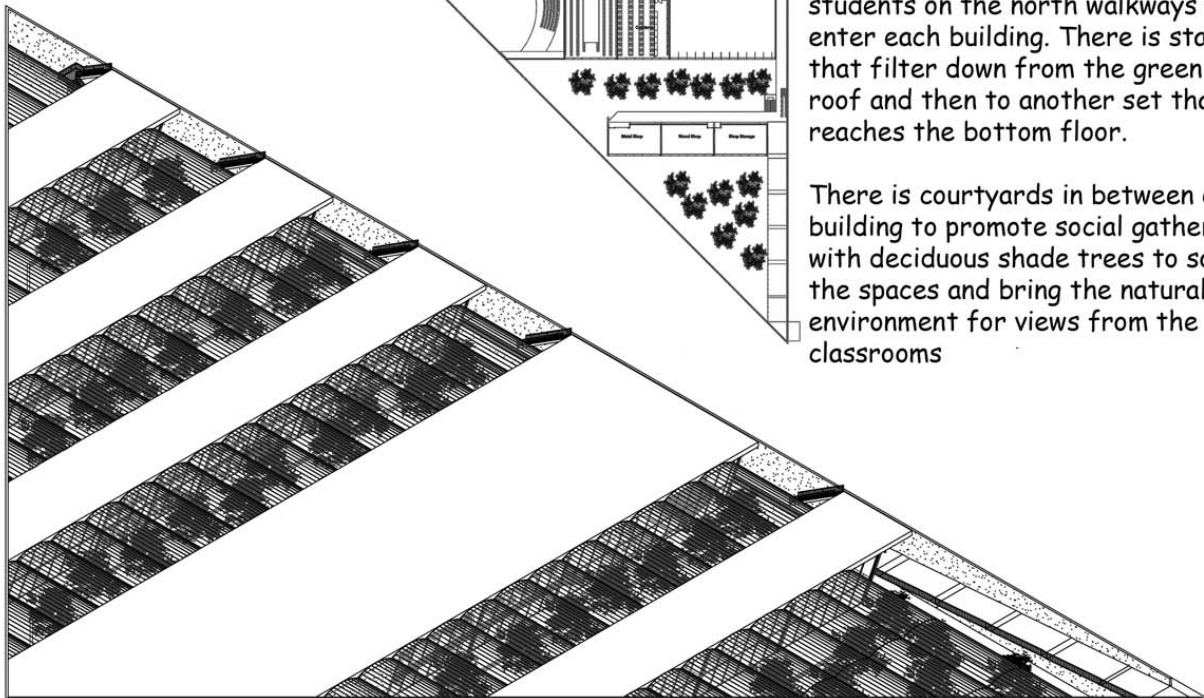


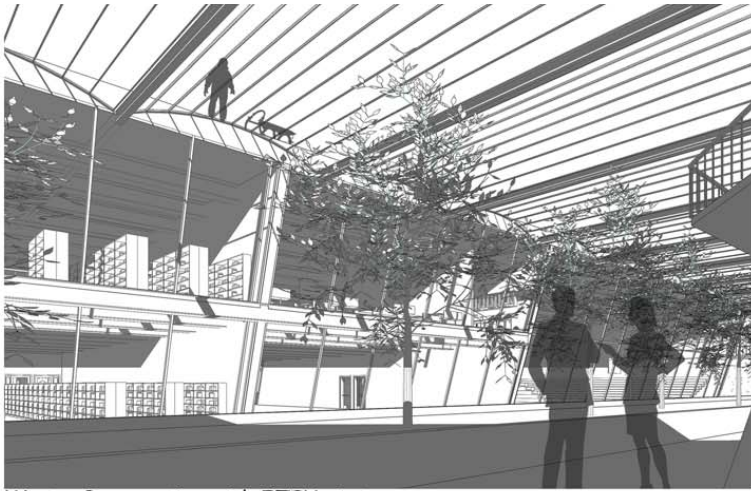
ALBION, NEBRASKA HIGH SCHOOL

This school is sited at the intersection of the major streets entering Albion but close enough to the center for local traffic and sited next to a public train line for students in surrounding cities.

The building is design with a major ramped walkway on the east side with tributaries that funnel students on the north walkways to enter each building. There is stairs that filter down from the green roof and then to another set that reaches the bottom floor.

There is courtyards in between each building to promote social gathering with deciduous shade trees to soften the spaces and bring the natural environment for views from the classrooms





Winter Perspective with ETFV winter cover

The building is placed in the ground for balanced thermal qualities and protect from the harsh winds. During the winter, the ETFV panels will cover between the buildings to keep warm air in and protect from the snow



The building is slanted towards the south to shade the glazing but during the winter, the sun will enter completely inside to heat the cold air.

The structure is composed of insulated concrete walls with storefront glazing on the south and steel beams to add support for the intensive green roof



Summer Perspective

