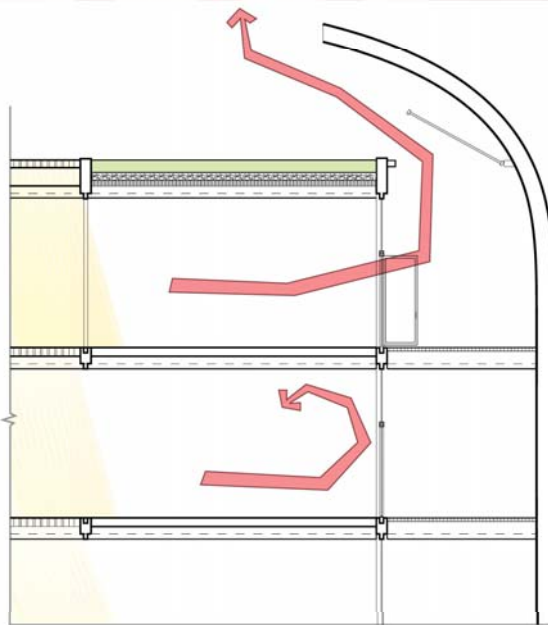


Albion High Albion, Nebraska

The people of Albion are experiencing the powerful phenomenon of the shrinking small town that needs to reinvent its core socioeconomic structure. Schools are the center of many small towns, and through their athletics, music departments, plays and musicals, they get people involved in their community, create jobs and educational opportunity. Maximizing this building by allowing the community access after hours provides a space for community theater, music events and classes for the entire town. A diversity of people to activate the building invites a more economic use of space, while providing social outlets that create entertainment, and pride for where they live. Ultimately achieving the retention and even growth of the town.

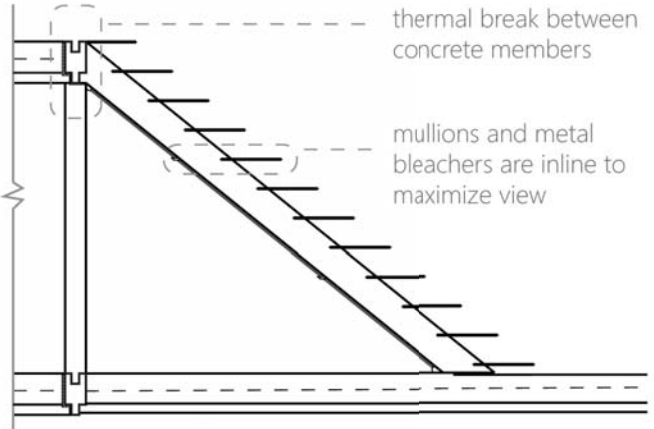
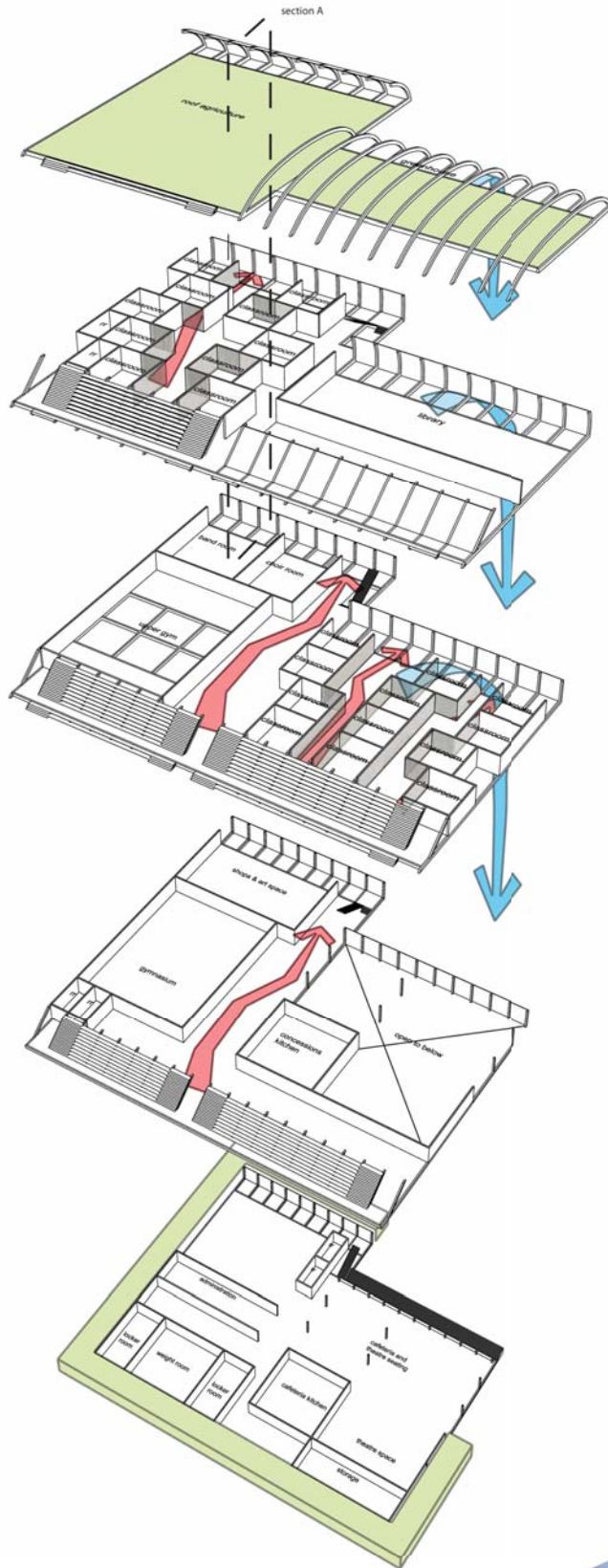


heat can be exhausted through the intermediary space, creating more air flow and a cooler environment

heat from the sun can be retained by closing the doors and adding another layer of insulation from the cold.

lights filters into lower portions of the building through circular glass block

section A



As the buildings athletic fields were integrated into the building, the bleachers became a shading device for an angled glass facade. Their depth is calculated to allow the winter sun to heat the interior concrete in order to reduce heating costs, while still accomodating the movement and seating of people for events.

The building is made up of circular glass block set within a concrete frame. The glass corridors and roof direct the two most important environmental factors for learning, light and fresh air, into adjacent classrooms.

