



# BRAIN SILO

DESIGNED BY: STEPHEN ELLIOTT



Grain Silo



I.M. Pei Bank



Nebraska State Capitol



Albion Nebraska Courthouse

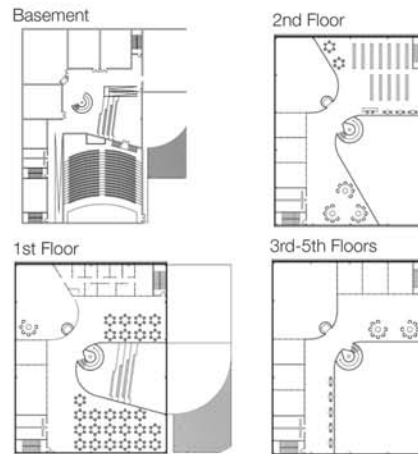
"When the old man first came to the plains there was a rolling sea of grass, and a lone tree, so the story goes, where they settled the town. They put up a few stores, facing the west and the setting sun like so many tombstones, which is quite a bit what a country store has in mind. ...

"Later, if the town lasts, they put through some tracks, with a water tank for the whistle stop, and if it rained, now and then, they'd put up the monument. That's the way these elevators, these great plains monoliths, strike me. There's a simple reason for grain elevators, as there is for everything, but the force behind the reason, the reason for the reason, is the land and the sky. There's too much sky out here, for one thing, too much horizontal, too many lines without stops, so that the exclamation, the perpendicular, had to come.

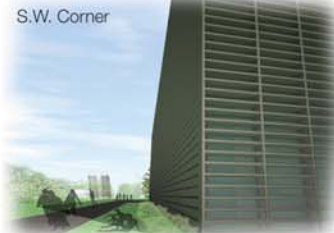
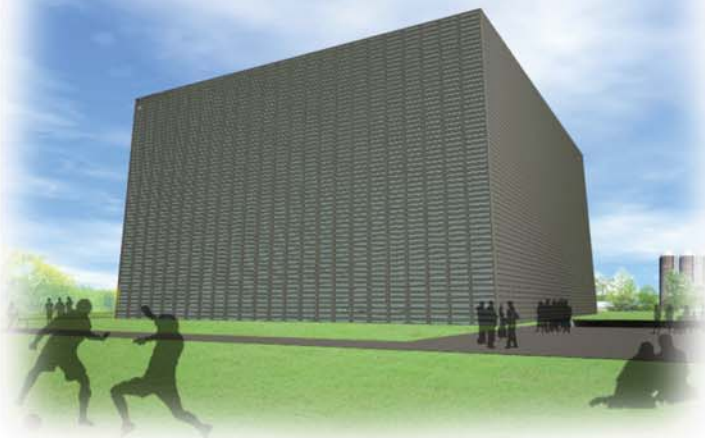
"Anyone who was born and raised on the plains knows that the high false front on the Feed Store, and the white water tower, are not a question of vanity. It's a problem of being. Of knowing you are there. On a good day, with a slanting sun, a man can walk to the edge of his town and see the light on the next town, ten miles away. In the sea of corn, that flash of light is like a sail.

"It reminds a man the place is still inhabited. I know what it is Ishmael felt, or Ahab, for that matter — these are the whales of the great sea of grass."

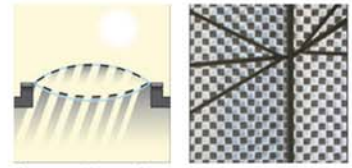
By: Wright Morris



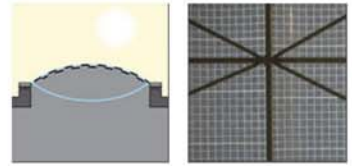
"When the old man first came to the plains there was a rolling sea of grass, and a lone tree..."



Vector Foiltec Pannels can create climatic envelopes that sense their environments and change their insulation and solar transmission as required. By printing overlapping gestalt graphics on multiple layers, and integrating the cushions with sophisticated pneumatics, we can move the different graphics together and apart from each other. This enables us to vary the amount of light and solar energy penetrating the building and the visual appearance of the envelope.

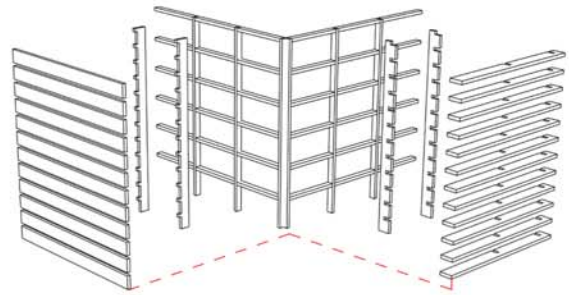
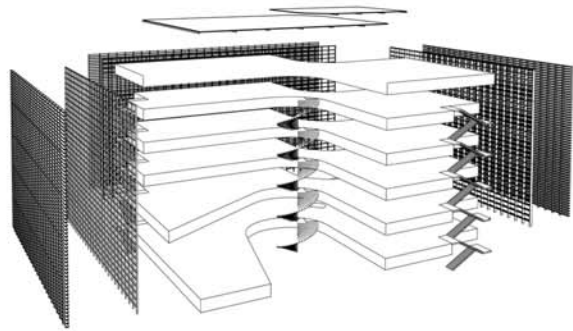
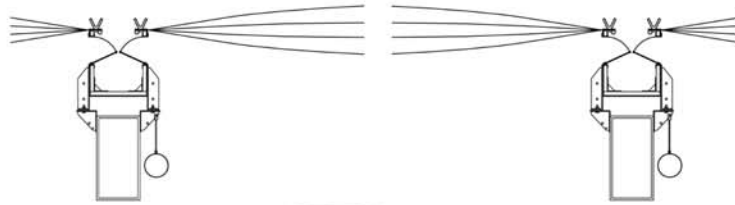


Open\_allows for solar gain



Closed\_blocks unwanted solar gain providing more insulation

Roof Diagram



Central Circulation Cores \_ Heart of the building



exterior screen\_fiber reinforced concrete louvers



Class Room \_ Space of developing minds

