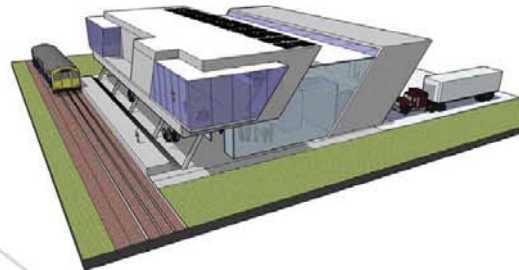


## BUS/TRAIN STATION

Location: Between highway 39 and railroad | Designer: Cinthia Barragan

The perfect location for this project does not only connect passengers to their final destinations, but it connects them to Albion. The circulation space of the bus/train station serves as a display screen, that informs passenger of activities and events that may be going on in town. The facility has a hotel on the second level to accommodate families who want to rest; each room is a movable unit which space can be contracted or expanded as needed. The building also has a restaurant and retail space to provide everything a passenger may need to have a good stay.

REPIONEERING



## ==MOVABLE UNITS



## INTERACTIVE FACADES ==

Interactive facades by using Mediamesh. Mediamesh is a stainless steel mesh interwoven with rounded profiles containing high-quality LEDs, which can display moving images - from logos to films, giving the facade an expressive media design, whether by day or by night.

