

DYNAMIC EDUCATION: new high school for Albion

Rauli Lehtinen



Located just south of Albion town center, the new school is symbol of self-sufficiency

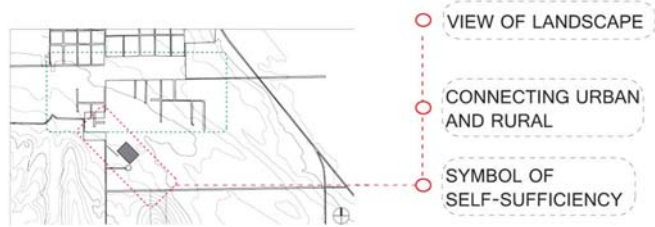
Primary innovation in the schools is the ability for the students to move their classrooms according to the weather conditions or other reasons. Students are the active learners.

The workshops, gym, theater and exterior spaces connect to the main educational tower and are for the students and the public alike.

Response to...

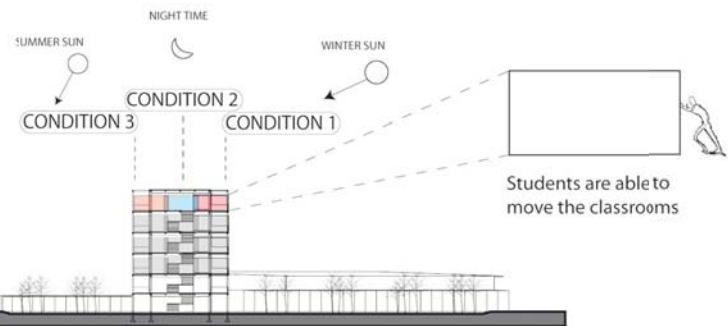


...changing conditions

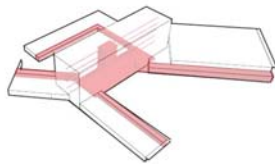


1. CLASSROOM (3rd-6th floor)
2. SHOP (music, art, choir, mechanics)
3. PERFORMANCE THEATER
4. ADMIN.
5. LIBRARY [2nd floor]
6. CAFE [2nd floor]
7. GYMNASSTICS (basketball, volleyball)

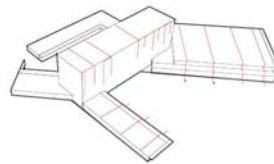
First floor plan



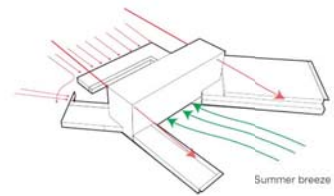
Section through education tower: response to climatic conditions



Circulation

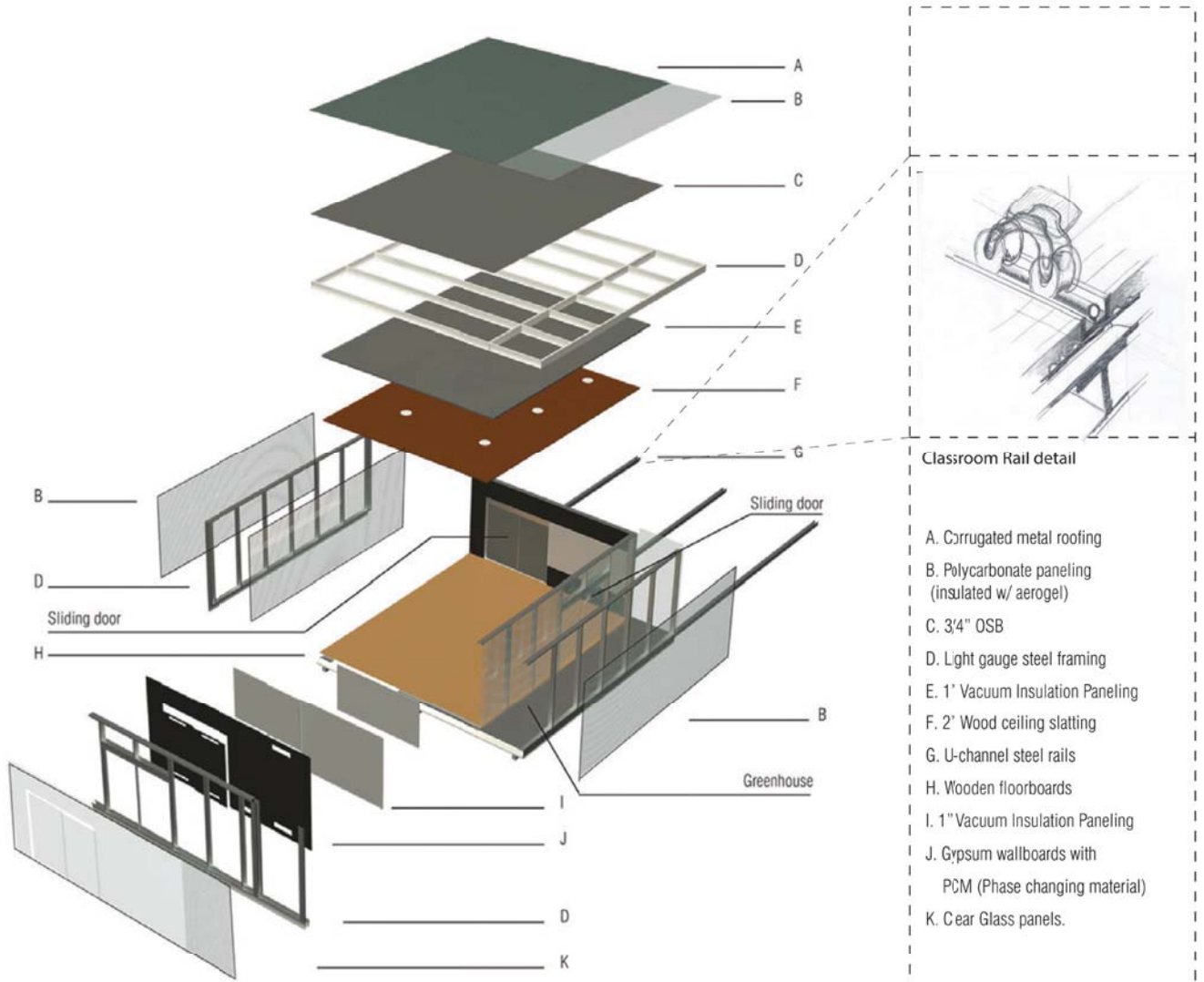


Water Collection



Wind Collection / Block

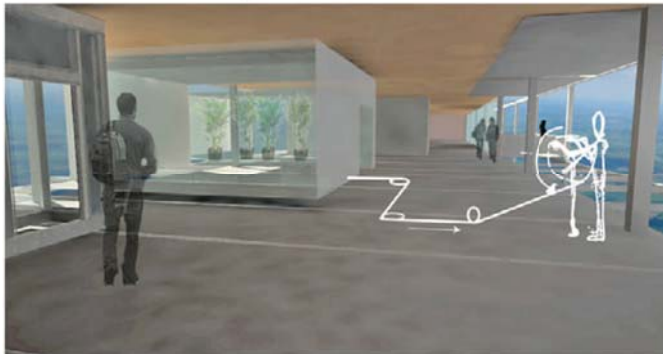




Exploded view of the classrooms



View from the hallway



Classroom

