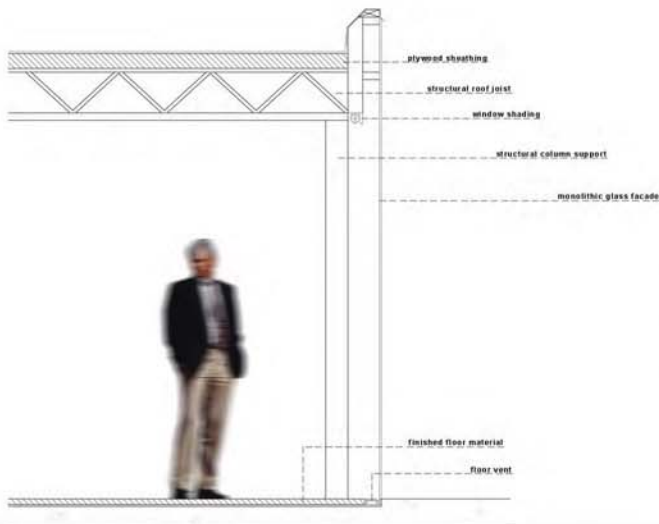
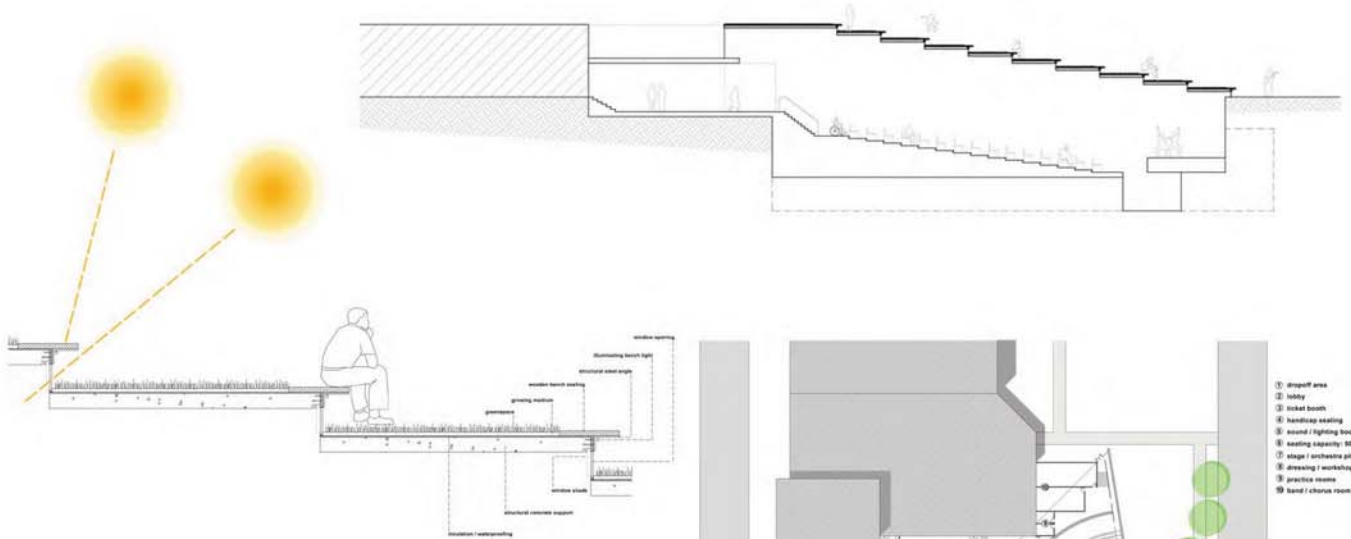


# performing arts center

by lucas fiegen



a  
c  
o  
u  
s  
t  
i  
c

The most structural property in this theater is the use of straw bale seating. The walls will serve as a distribution of sound absorption as well as the main structure upon which the air on top of the straw bale will be a multilayered seat with a hole for the feet. By using straw bale, the most natural property, the seat will be much lighter due to its density by 50% than with concrete. With the straw bale will give a sense of belonging to the nature of the region.

