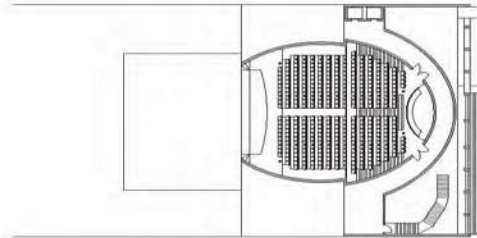


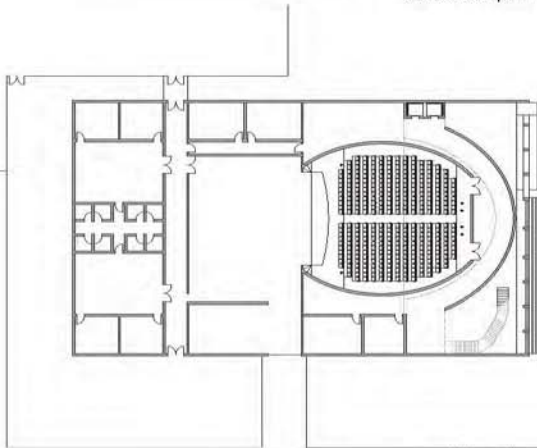


## performing in albion

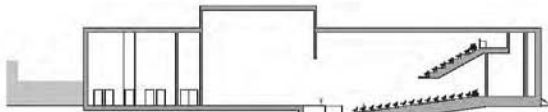
michelle morehead  
michellef150@hotmail.com  
402.618.0479



second floor plan



ground floor plan



longitudinal section

boone county school system, and the cultured community of albion, nebraska, shares the common need of a venue for performing arts. this design fulfills that need while providing the ability to keep the students and the community members separate when the need arises. the building has a simple and sophisticated design that will fit nicely in the context of the existing brick school without trying to mimic what already exists. comfort, class, and originality have been considered in this design which provides a subtle showpiece for albion, nebraska.

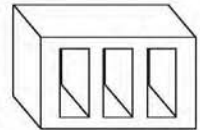
the students from boone central school have their own private entrance to the new expansion, the hallway along their new band and chorus rooms serves as an extension of the hallway passing the business classes in the school. there are 8 practice rooms, storage, and office space for the faculty, as well as large practice spaces for each musical class. both classrooms have double doors for the easy placement and removal of a piano. the double doors from the band room are directly across from double doors leading to the stage in order to move a piano easily from one space to the other.

the doors that lead from the rest of the performing arts building to the hallway outside the classrooms are lockable so that in the case of a community event, the school is closed to the public. there is separate access from the cast dressing rooms or the loading dock in the shop to the stage so that the cast of a production can still remain separated from the audience members. the audience has a moderate lobby that is split up by a large curving wall. once tickets are purchased, people are free to wander around the wall to view any artwork that may be displayed.

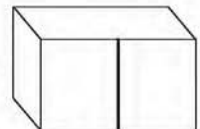
the guests of the performing arts center may also explore the balcony level which has terraces on the north and south side. there is an opening in the center which gives an observation platform to the lobby below. the balcony expands the seating of the auditorium from 345 to 550. it can also be closed off for smaller events so that the space does not feel overly large. a person is able to reach the balconies by stairs on the south side or an elevator on the north side.

the interior of the auditorium is finished in custom designed acoustic concrete blocks. the blocks give texture and pattern to the walls and create a beautiful and neutral space for any event.

this patterned block is used on the main exterior walls. the block is custom-designed for this building. the ratio of the inner rectangle is derived from the dimensions of the windows surrounded by one layer of concrete block. the cost of designing this block is minimal and practical due to the mass-production needed to make all of the exterior walls. the custom block turns an inexpensive, practical material into a one-of-a-kind piece of art.



the split faced block is on the interior of the building. the concrete masonry unit (cmu) with the score down the middle gives the illusion of a square block. because all of the walls in the building are sized based off the dimensions of a cmu, the square pattern will never be interrupted.



inside the auditorium, acoustics are a major concern to deal with this issue, another custom-designed cmu is used. this block uses the ratio of the windows from the exterior of the building but orients the rectangles vertically instead of horizontally. this allows for three voids in each block for sound to enter and reach the insulation that is on the other side of the block.

