

REVITALIZING NEGATIVE SPACES

ALLEYS AND DEAD SPACES

| Designer: Cinthia Barragan

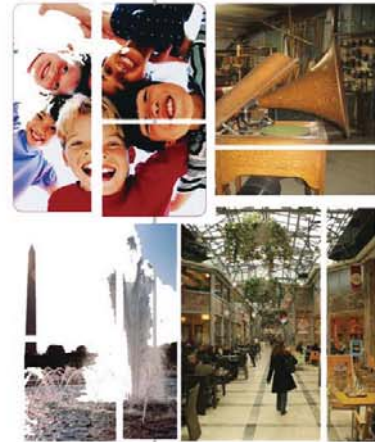
This project is a combination of interior and exterior spaces. The ideas was to create and inviting place where people could relax and enjoy. The enclosed structure is a retail building, connected to a open plaza shaded by louver system This louvers systems is used in different ways throught the design; takind advantange of natural light as much as possible.

REVITALIZING NEG

ALLEYS AND DEAD SPACES



URBAN PLAZAS



REPIONEERING



BEAMS AS SOLAR CONTROL SYSTEMS

SUNLIGHT FLOWS INTO THE SPACE DURING THE DAY STORING HEAT FOR THE NIGHT DURING WINTER TIME.

IN SUMMER VINES WHICH LEAVES POP OUT WITH THE WARMTH CAN BE LAID ACROSS THE BEAMS TO SHADE THE STRUCTURE AND PREVENT EXCESSIVE HEAT BUILDUP.

