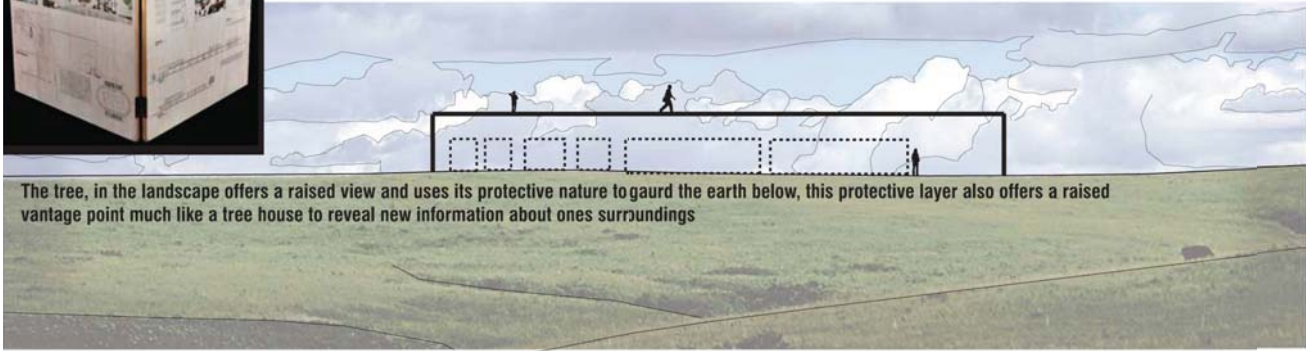


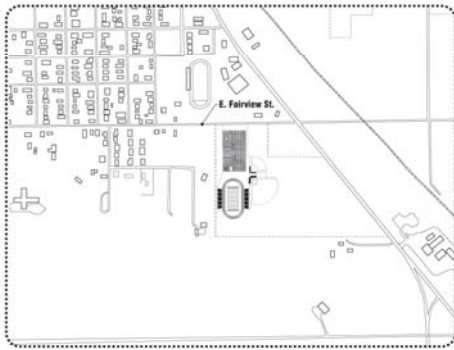


New Vantage Point

Designed by: Scott Owen Jr.

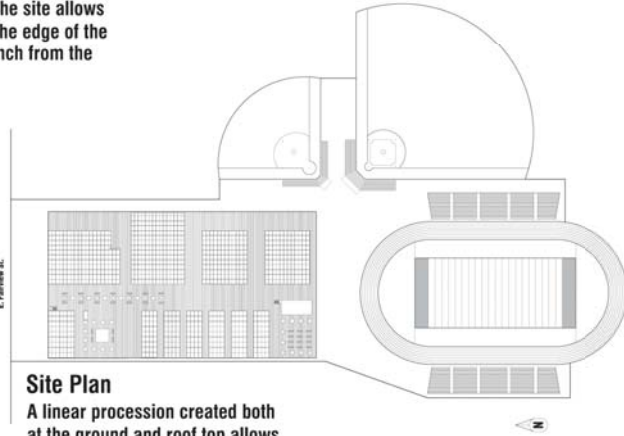


The tree, in the landscape offers a raised view and uses its protective nature to guard the earth below, this protective layer also offers a raised vantage point much like a tree house to reveal new information about ones surroundings



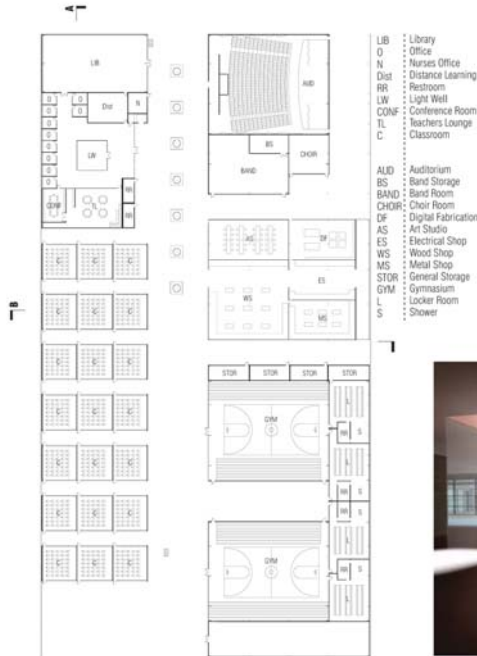
Albion, Nebraska

Adjacent to Fairview St. the site allows the project to just touch the edge of the city creating another branch from the main trunk.

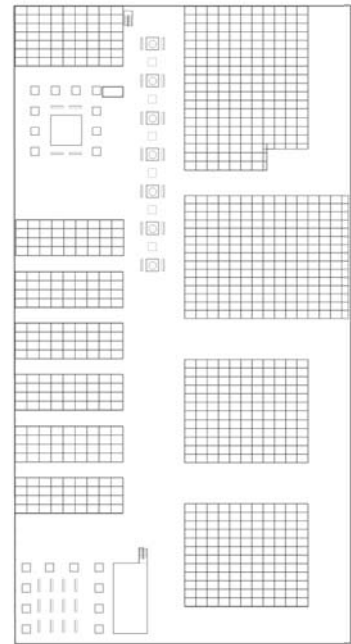


Site Plan

A linear procession created both at the ground and roof top allows all experiences to be observed or engaged with.



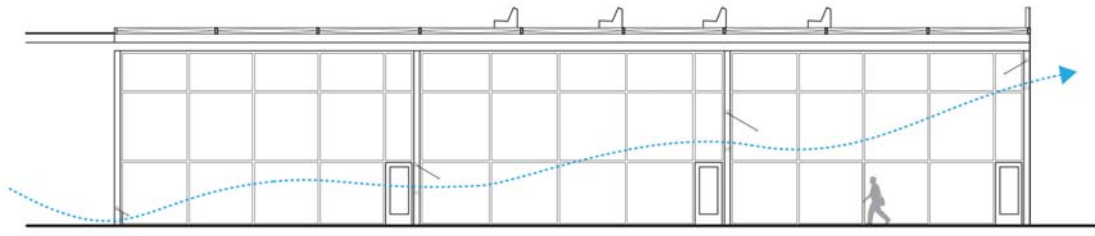
- LIB : Library
 - O : Office
 - N : Nurses Office
 - Dist : Distance Learning
 - RR : Restroom
 - LW : Light Well
 - CONF : Conference Room
 - TL : Teachers Lounge
 - C : Classroom
-
- AUD : Auditorium
 - BS : Band Storage
 - BAND : Band Room
 - CHORC : Choir Room
 - DF : Digital Fabrication Lab
 - AS : Art Studio
 - ES : Electrical Shop
 - WS : Wood Shop
 - MS : Metal Shop
 - STOR : General Storage
 - GYM : Gymnasium
 - L : Locker Room
 - S : Shower



Floor Plan

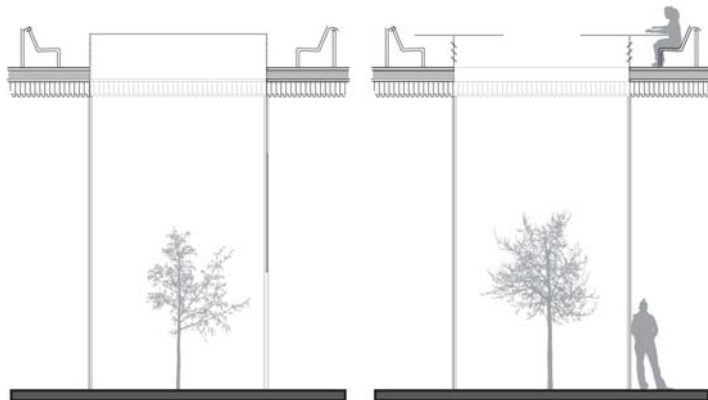


Section A



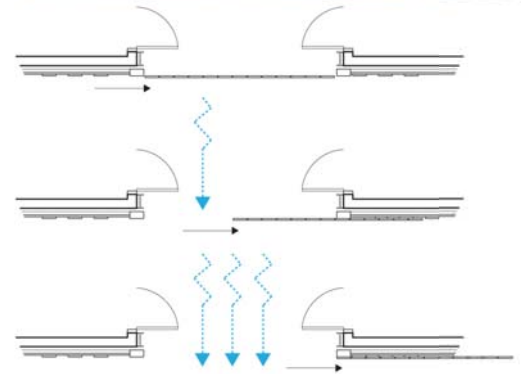
Classroom Ventilation Diagram

Operable Windows between classrooms allow for cross ventilation which increases natural air flow to help keep students healthy and alert.



Light Well Detail

Light wells offer a break in the darkness throughout the large roof allowing the sun to creep around the edge and illuminate the underside. The tube itself can be accessed by workers, the top can slide open in the fall spring and summer to allow students to use it as a table to write or eat on. The space itself has louvers which are opened along with the lower door which can push air passing the roof top down underneath.



Wind Screen Detail

Wooden gates break up the space between classroom nodes which can be opened to increase natural ventilation from east to west, and can be shut at night to help with security.

