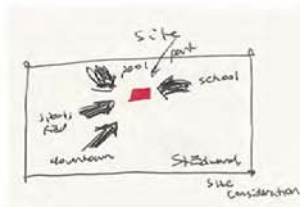
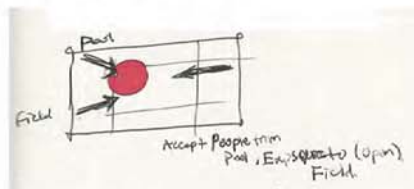


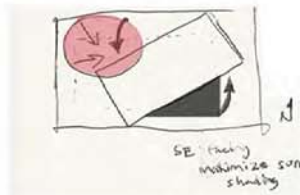
Grid: Green taken the high school attention
 Red: pool and park condition



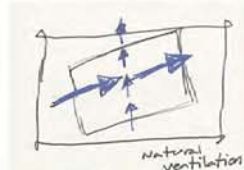
SITE: the site is influenced by many factors. The high school to the east. The pool and the park to the north and north east.



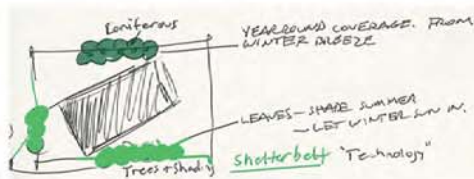
Gathering: The first consideration in rotating building was to create a gathering space to accept the pool and the sports field. Creating an open air space to congregate.



Southeastern Exposure: Another factor in rotating the building, is to create a SE exposure to maximize the eastern sun and shade from direct south sun.

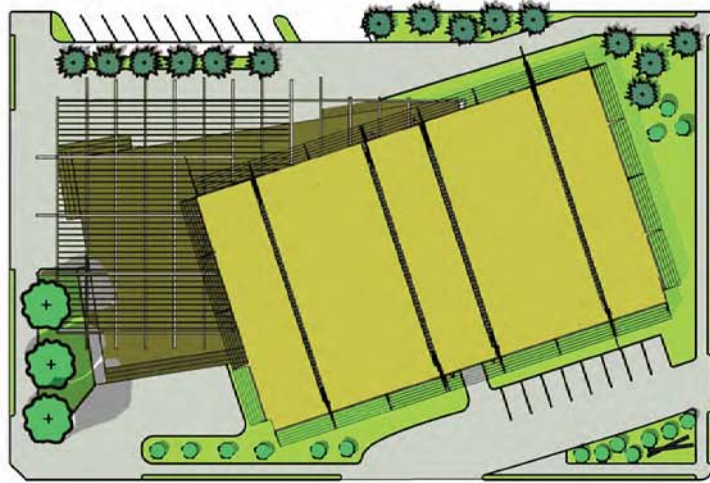


Natural Ventilation: providing doorways adjacent from each other is essential for achieving natural ventilation

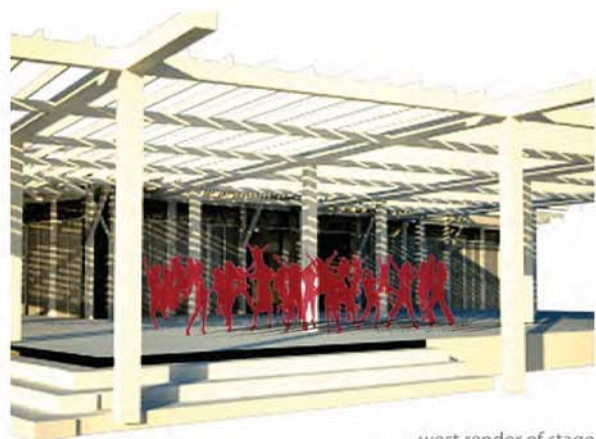


shelterbelt technology

Design starts with an idea. Then the idea reveals itself through many representations, especially the SKETCH. Drawings not only record the visions but also develop new steps by learning from the ideas put down on paper.



site plan
 1" = 30'



west render of stage

