

# Re-Introduction of History into Learning

Designed by: Meghan Sarkozi



## PIONEERS

- TRAVELED IN COVERED WAGONS
- CLEARED LAND TO CULTIVATE AND BUILD
- CULTIVATION OF LAND WAS IMPORTANT IN MIDWEST
- USED LAND TO GROW FOOD & RAISED CATTLE TO TRADE



## SOD HOUSES "SODDY"

- DUG A HOLE INTO DIRT BANK AND ROOF MADE OF WOOD BOARDS
- HOUSE WAS COVERED IN SOD- THICKLY ROOTED PRAIRIE GRASS
- LOW RISE STRUCTURES BUILT INTO THE GROUND TO PROTECT FROM HARSH WINDS
- AFTER ADANDONED SOD HOUSES RETURN TO THE LAND AS ROLLING PRAIRIES
- STRAW-BALE CONSTRUCTION DEVELOPED IN NEBRASKA FROM SOD HOMES

## MONOLITHIC ARCHITECTURE

- CONSTRUCTION OF A BUILDING THAT IS CARVED, CAST, OR EXCAVATED FROM A SINGLE MATERIAL
- PROMOTE THE BRAUTY OF MODERN MATERIALS AND CONSTRUCTION
- SINGLE PIECE OF ARCHITECTURE THAT LENDS TO THE WHOLE

## ARBOR DAY FOUNDATION

- ESTABLISHED IN 1872 BY J. STERLING MORTON IN NEBRASKA
- CREATED TO BRING AN EMPHASIS ON BRINGING SOMETHING BACK TO THE LAND WE USE EVERYDAY
- THE FIRST ARBOR DAY WAS APRIL 10, 1872 WHERE THEY PLANTED 1 MILLION TREES



## WOOD ARCHITECTURE

- WOOD IS ONE OF THE MOST COMMON AND MEANINGFUL MATERIALS THAT PLEASES THE SENSES OF THE USER
- THE PROPORTIONS OF NATURAL DIMENSION OF WOOD CREATES A CONNECTION BETWEEN NATURE AND THE USER
- WOOD IS THE OLDEST BUILDING MATERIAL THAT HAS ITS OWN SET OF INSULATION PROPERTIES
- A MATERIAL THAT IS TAKEN FROM NATURE THAT CAN RETURN BACK TO NATURE, ESSENTIAL SUSTAINABILITY FACTOR



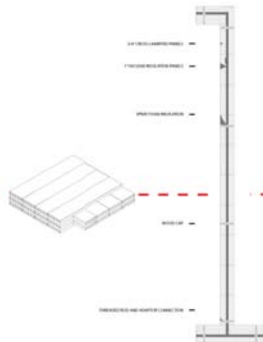
## VACUUM INSULATION PANELS

- FIVE-EIGHT TIMES BETTER THAN REGUALR INSULATION
- ABILITY TO CREATE A THIN, HIGHLY INSULATED CONSTRUCTION FOR WALLS, ROOFS, & FLOORS
- REDUCES OVERALL ENERGY COSTS WITH FIXED PANELS FOR EASE OF CONSTRUCTION



## CROSS LAMINATED TIMBER

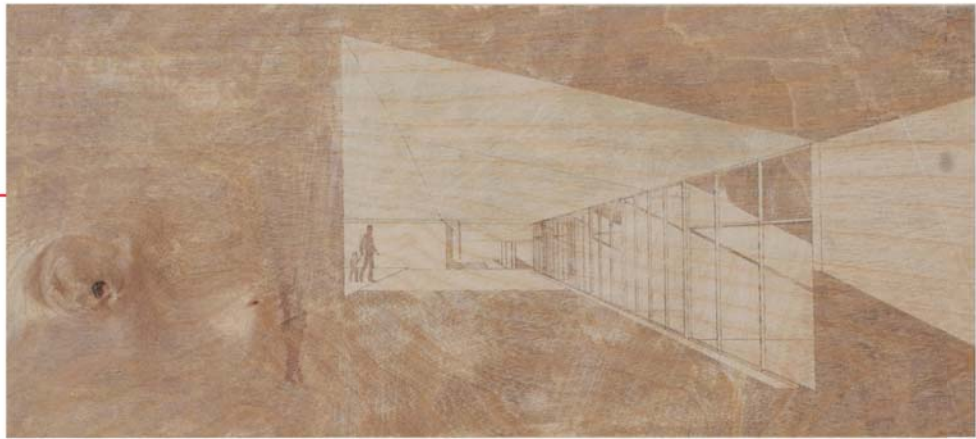
- CLT IS THERMALLY EFFICIENT, FIRE-RESISTANT, HAS ACOUSTICAL PROTECTION, AND A LOW-CARBON FOOTPRINT
- CLT REDUCES THE AMOUNT OF SWELLING AND SHRINKING IN THE PANELS
- PANELS ARE STRUCTURALLY STABLE WITH HIGH SPANNING CAPABILITIES
- CLT PROVIDES A UNIQUE TEXTURE TO THE BUILDING THAT ENHANCES THE OVERALL DESIGN



## VOLTARLUX

- HELPS REDUCTION OF OVERHEATING IN SUMMER MONTHS
- PROVIDES HEAT INSULATION IN WINTER MONTHS
- A SUFFICIENT AMOUNT OF POWER CAN BE GENERATED ON CLOUDY DAYS
- PANELS ARE LIGHT PERMEABLE WHILE PROVIDING A HIGH AMOUNT OF SHADE





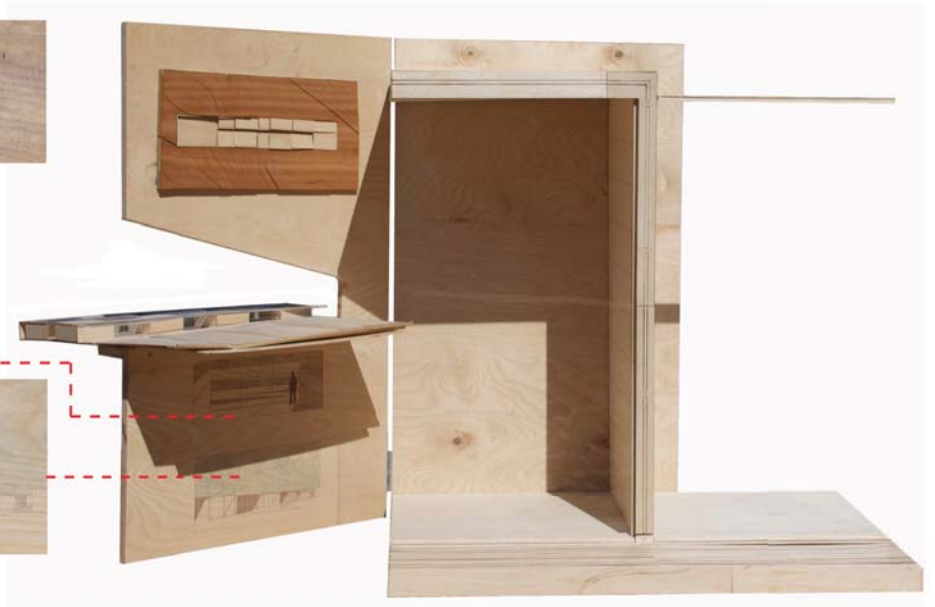
Interior View on wood



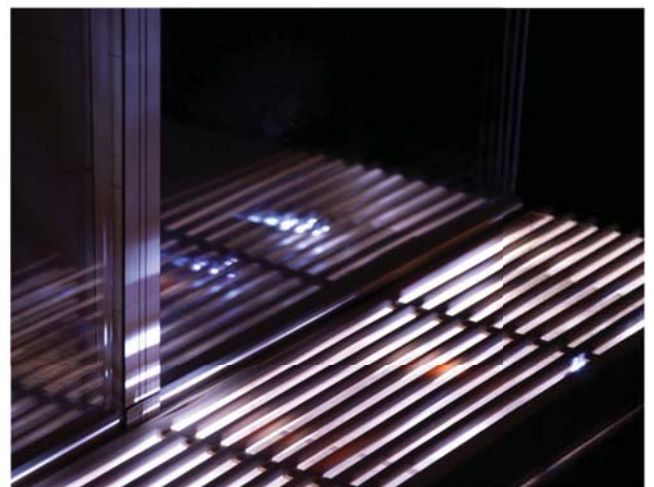
Interior View on wood



Interior View on wood



Night view showing shadow and light quality



Close up view showing light quality at night