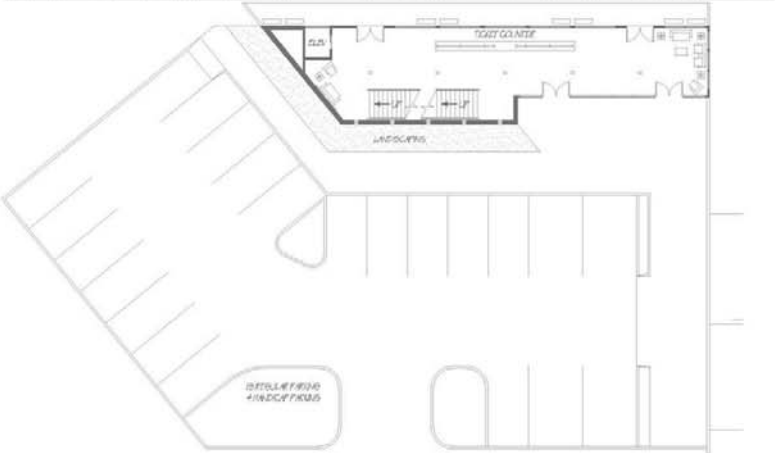
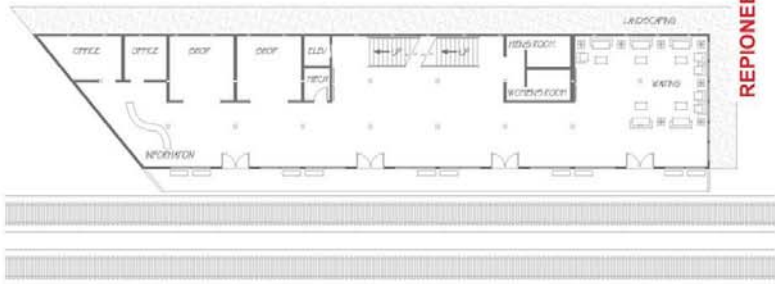


# Train Station

Location: West of N 5th & Clark | Designer: AJ Campbell

This project includes the re-design of Albion's hwy system in conjunction with a newly constructed train station. Rather than running hwy 14 through down, this proposal keeps hwy 14 on the northeast edge of town, running alongside the existing railroad tracks. The hwy crosses the tracks at 5th & Clark at an underpass, where the train station is positioned parallel with the existing railroad tracks. Encompassing the tracks on both sides, the station is basically two building with an underground connection. The main entrance is from the southwest, where one would then descend to the lower level to go under the tracks to the northeast building. The train station includes a ticket counter, outdoor observation platform, information center, multiple shops for local businesses, comfortable waiting areas, a restaurant/bar that hovers over the tracks overlooking downtown Albion, and a gallery for showcasing exhibits. The building takes advantage of passive solar heating and thermal mass, largely reducing its carbon footprint

REPIENING



TRAIN STATION - GROUND LEVEL PLAN

